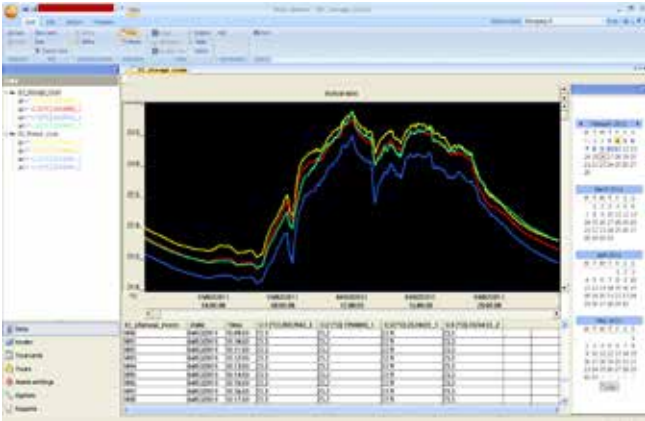
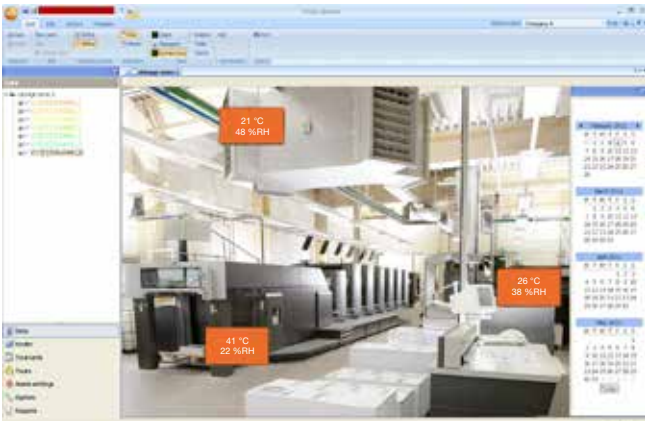


testo Saveris software



Small Business Edition (SBE): Clear information, always up to date, and automatically documented

- The measurement data can always be shown as a graph or table.
- Various probes can be compiled into groups. Logical units by measurement task are thus formed.
- The measurement data view over days, weeks or months is freely definable. The integrated calendar offers practical assistance here.
- Form and time of the reporting are predefined once.
- The creation and saving of reports as a PDF file now takes place automatically in accordance with the set conditions. The files are therefore ready to be printed at any time.



Professional (PROF): Now more flexible with Professional software

The PROF (Professional) software version offers interesting additional functions beyond the attractive standard functions of the basic version SBE, e.g.:

- Client-server concept: The measurement data can be monitored by various PCs integrated into the network.
- Photographs of machines or rooms can be saved as an image. The respective measurement values are shown directly at the position of the probe in the room or at the machine in these. The link between the location and the measurement value is thus very easily visualized.
- A comprehensive alarm management offers the option of alarming more than two people at the same time or in succession. Depending on the day of the week and/or the time, it is possible to choose whether an alarm is given as an e-mail or an SMS.
- Tour planning with calendar management allows a clear presentation of planned and completed transports.



CFR version: Validatable CFR software

The CFR software fulfils the requirements of the FDA's 21 CFR Part 11 and is thus validatable.

**testo Saveris Web Access:
Flexible measurement data viewing via browser**

- Measurement data can be viewed via the browser of any PC, smartphone or tablet – without software installation
- Intuitive user interface
- Easy acknowledgement of alarms



Installation made easy

- Connect testo Saveris base to mains. The probes can now be logged on at the base: They are switched on in series and automatically identified by the base.
- The testo Saveris base is connected to the PC via USB or Ethernet. The software is installed on the PC with help from the installation wizard.
- The system is ready for configuration: Probe name, limit values, measuring cycles and alarms can be adapted to the individual measuring tasks.

Overview of software functions

	SBE	PROF	CFR
Diagrams/tables/alarm overview/PDF reports	•	•	•
Calendar management	•	•	•
Presentation of probe groups	•	•	•
Alarm dispatch (e-mail, SMS, relay)	•	•	•
Comprehensive alarm management in stationary operation		•	•
Automatic measurement data update		•	•
"Online mode" in stationary operation		•	•
Measurement data on background photo of measurement sites		•	•
Integration in network (client-server)		•	•
Tour planning with calendar management		•	•
Allocation of access rights for stationary and mobile probe groups		•	•
Search function for routes		•	•
Configuration of print text		•	•
Diagrams/tables with identification of start and stop of route		•	•
Audit trail for the traceability of user activities		•	•
21 CFR Part 11 compliant (validatable)			•
Electronic signature			•
Allocation of access rights on three user levels			•

Overview of application areas of testo Saveris software

	SBE	PROF	CFR
Stationary operation	•	•	•
Mobile operation		•	•
Stationary and mobile operation		•	•

Software versions

SBE software, incl. USB connecting cable base-PC Order no. 0572 0180
PROF software, incl. USB connecting cable base-PC Order no. 0572 0181
CFR software, incl. Ethernet connecting cable base-PC Order no. 0572 0182
testo Saveris Web Access Order no. 0572 0001